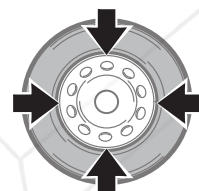




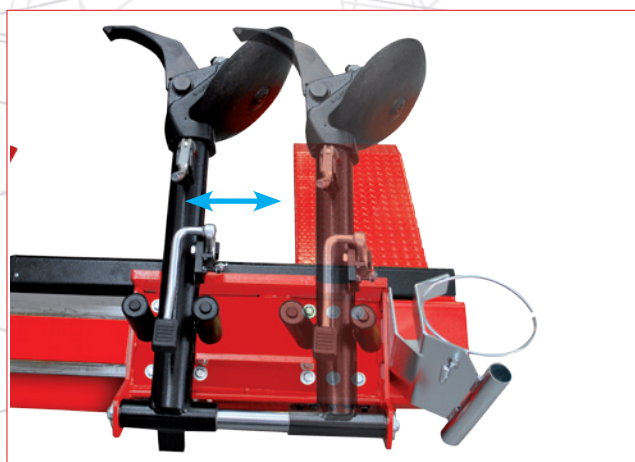
# HD 700

## 26"



**Electrohydraulic tyre changer for industrial vehicle, truck and bus wheels from 14" to 26"**

The ideal machine for the professional who needs an essential solution but refuses to sacrifice quality



Carriage with hydraulic left-right translation and tool arm with safety lock system

HD700 can work with wheels weighing up to 700 kg.

Turntable spindle with **clockwise** and **anticlockwise** rotation.

### TECHNICAL DATA

Max wheel width	700 mm
Max. wheel diameter	1600 mm
Chucking device capacity	14" ÷ 26"
Unit motor	1,1 kW
Gear box motor	3 Ph - 1,5 kW
Max. wheel lifter cylinder capacity	1600 kg
Max. wheel lifter capacity	700 kg
Cylinder load capacity	1200 kg
Weight	565 kg

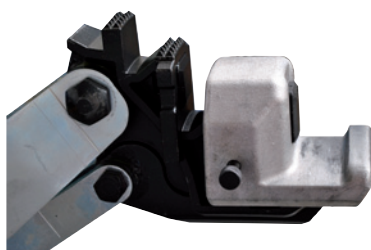
## STANDARD ACCESSORIES



## RECOMMENDED ACCESSORIES



**2306040** Tubeless tyre roller for truck and bus wheels



**8-12100156** GL New special clamps with plastic inserts for alloy rims



**8-12100007** Locking adapter for alloy wheels Ø161 mm

**8-12100005** Locking adapter for alloy wheels Ø164 mm

**8-12100006** Locking adapter for alloy wheels Ø176 mm

**8-12100008** Locking adapter for alloy wheels Ø 202 mm

**8-12300001** Locking adapter for alloy wheels Ø 220 mm

**8-12100009** Locking adapter for alloy wheels Ø 221 mm

**8-12100010** Locking adapter for alloy wheels Ø 281 mm



**0-12100701** DV120 Bead pressing device