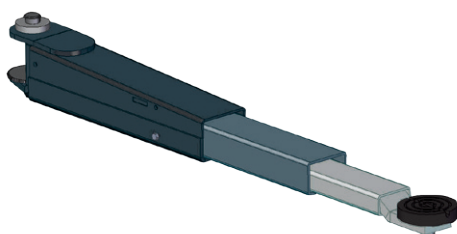


Two-column electro-hydraulic lift.

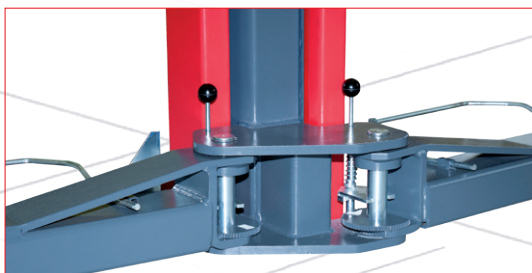
The **H4002 N** lift is operated by a master/slave type hydraulic circuit with automatic realignment of the two trolleys at each lifting cycle; thanks to this circuit, the **H4002 N** lift is particularly reliable, easy to install and do not require mechanical adjustments after the first installation (there are no metal ropes between the columns).



- Unit with **4 symmetric arms** with three sections.



- Drive with traction cylinders and with master/slave circuit.



- Arm attachment trolley unit, compact and with **reduced overall dimensions** from the ground.

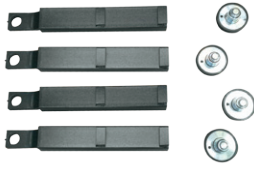


TECHNICAL DATA

| | | |
|-----------------------|---|---------|
| Max. capacity | 4000 kg | |
| Lifting/lowering time | 49/55 s | |
| Power supply | 230/400V - 3ph - 50/60Hz 230V - 1ph - 50Hz | |
| Electric motor power | 2,6 kw | |
| Max height | ERCO H4002N | 3870 mm |
| | ERCO H4002N-V | 4470 mm |
| | ERCO H4002N-XV | 5070 mm |

- Control unit with manual descent controls

ACCESSORIES ON REQUEST



8-43100192

Set of extended height range pads (4 pcs),
h.= 80/170 mm



8-41100103

Manual emergency descent pump

DIMENSIONS

