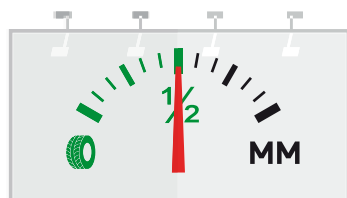




UNIFORMITY
high-test tyre



**THE SAME
MATCH-MOUNTING,
HALF THE STEPS**



**Diagnosis and match-mounting
directly on the tyre changer**



**A variable load presser roller for
measuring variations in radial and side force.
A real on-road simulator.**

TECHNICAL DATA

Rim diameter	12" ÷ 32"
Maximum tyre diameter	1200 mm
Maximum tyre width	381 mm (15")
Rotation torque	1100 Nm
Rotation speed	7 rpm-18 rpm
Bead breaker	
Maximum opening	26"
Shoe force	7600 N
Power supply	electric 1Ph 230V-0.98 kW 50Hz/60 Hz electric 1Ph (alternative) 110V-0.98 kW 50Hz/60Hz
Operating pressure	8 bar
Weight	380 kg
Dimensions l x d x h	1700 x 2000 x 1800 mm